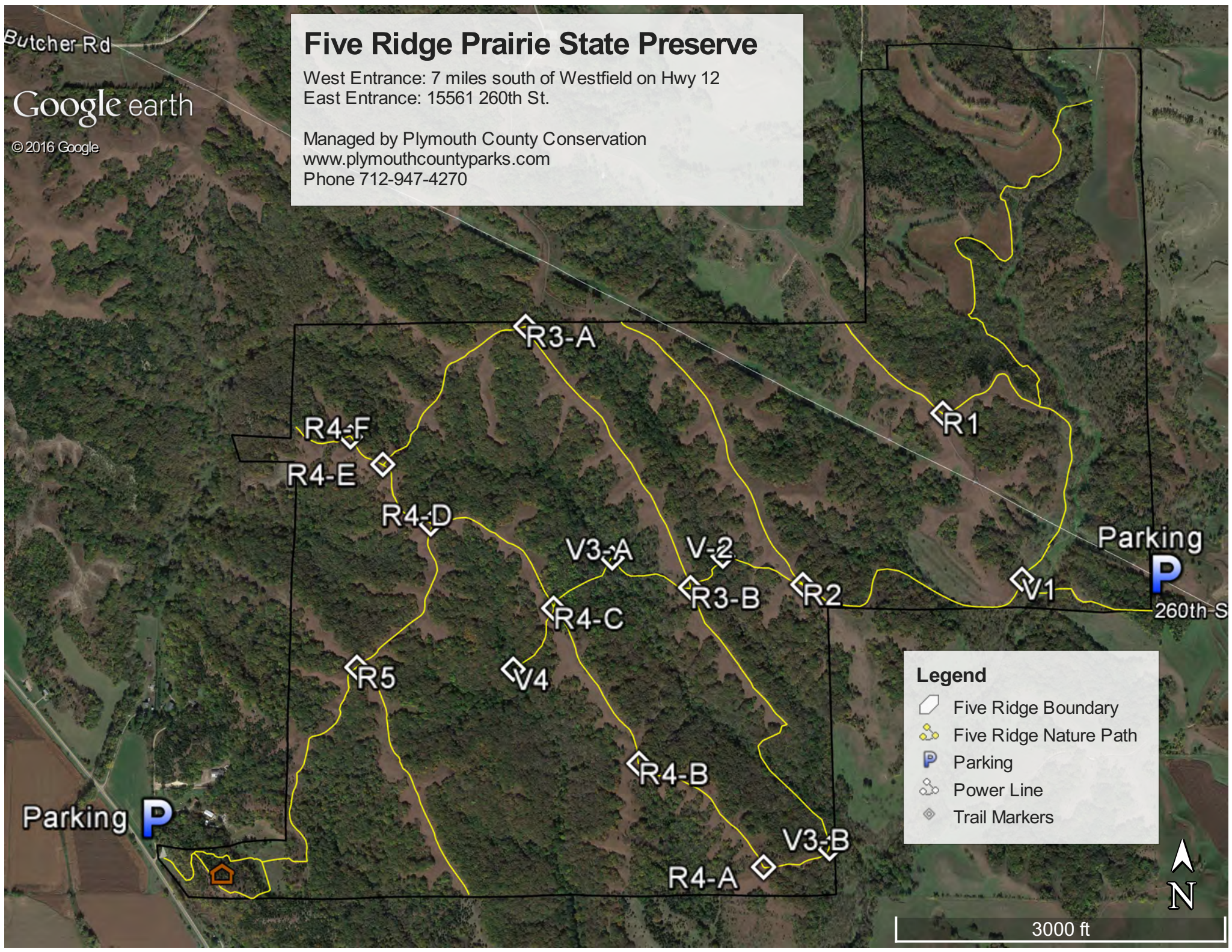


Butcher Rd

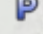
Google earth

© 2016 Google

Five Ridge Prairie State Preserve
 West Entrance: 7 miles south of Westfield on Hwy 12
 East Entrance: 15561 260th St.
 Managed by Plymouth County Conservation
www.plymouthcountyparks.com
 Phone 712-947-4270



Legend

-  Five Ridge Boundary
-  Five Ridge Nature Path
-  Parking
-  Power Line
-  Trail Markers

Parking **P**

Parking **P**
260th-S

3000 ft

